







- Professional Landlord
- White Goods Included
- Pets Considered
- Council Tax Band TBC
- Zero Deposit Option Available
- New Build Property
- Off Road Parking
- Call For More Information
- Long Term Tenancies Available





ZERO DEPOSIT OPTION AVAILABLE. Jan Forster Estates are delighted to offer this brand new 'Kingsville', located in the magnificent new development in Meadow Hill, in Throckley.

Kingsville Presenting a contemporary three-storey residence, this property provides a versatile layout of 3-4 bedrooms, with the fourth room adaptable as a study or bedroom.

The fully integrated kitchen seamlessly connects with the family and dining areas, creating an ideal space for entertaining, with French doors leading from the family area to the rear garden. Ascending to the first floor, you'll find bedroom 1 with an en-suite, alongside a family lounge illuminated by a large window that welcomes ample natural light. The second floor encompasses two additional bedrooms and a family bathroom.

Located just 7 miles west of Newcastle city centre, it's the ideal base yet is still within easy reach of the city's shops, bars, restaurants, theatres and museums. Just a short drive to Ponteland (4.2 miles) or Jesmond (8.1 miles) open a further choice of green spaces, riverside walkways, boutiques, cafes and restaurants.



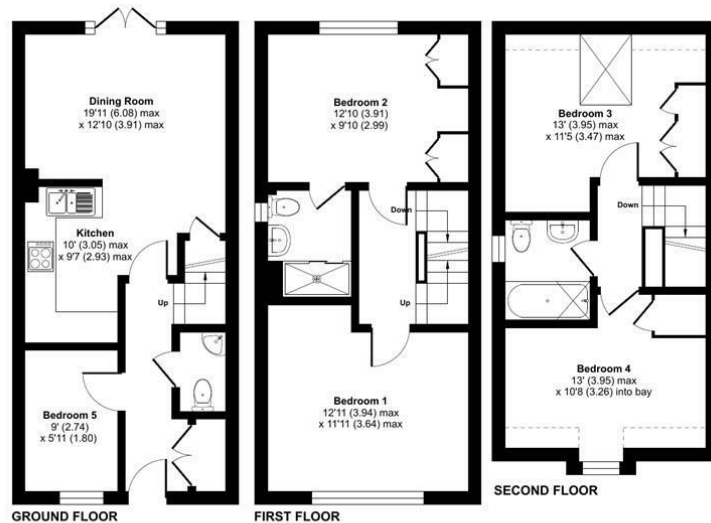
Lomond, on behalf of Lloyds Living, part of Lloyds Banking Group, operates a growing portfolio of more than 3,000 professionally managed homes for rent, improving access to good value, quality, sustainable housing across the UK. Lloyds Living helps to support investment into local communities by building and renting homes that people want, in the places they are needed.

Property features and specifications may vary on a plot-by-plot basis. Whilst every attempt has been made to ensure accuracy, all measurements are approximate and not to scale. Computer-generated images, floor plans, and photos (CGIs) are for illustrative purposes only and may not represent the final design or finish of the property. For further information on layouts and specifications, please speak to your Lloyds Living representative.

Approximate Area = 1069 sq ft / 99.3 sq m  
 Limited Use Area(s) = 23 sq ft / 2.1 sq m  
 Total = 1092 sq ft / 101.4 sq m  
 For identification only - Not to scale



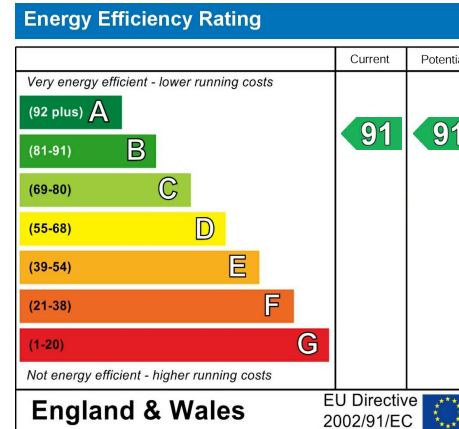
Denotes restricted  
head height



Floor plan produced in accordance with RICS Property Measurement Standards incorporating International Property Measurement Standards (IPMS2 Residential). © nichecom 2025. Produced for Lomond Property (Lettings). REF: 1344661

## The difference between house and home

You may download, store and use the material for your own personal use and research. You may not republish, retransmit, redistribute or otherwise make the material available to any party or make the same available on any website, online service or bulletin board of your own or of any other party or make the same available in hard copy or in any other media without the website owner's express prior written consent. The website owner's copyright must remain on all reproductions of material taken from this website.



[www.janforsterestates.com](http://www.janforsterestates.com)

Contact Us: 0191 236 2070

